

Provision for JFS-A/B/B Plus Standard Logo Mark Management (Requirements for Conforming Organizations and Audit Companies)	Issue date: 2023-07-11	Document number: PR_101_07_R01_en
	Revision date 2025-06-13	Revision number: R01

Provision for JFS-A/B/B Plus Standard Logo Mark Management (Requirements for Conformity Assessed Organizations and Audit Companies)

■ Requirements for Conformity Assessed Organizations

1. Terms and Conditions for Use of JFS-A/B/B Plus Logo Mark

A conforming organization of JFS-A/B/B Plus (hereinafter referred to as “conforming organization”) may use the standard's logo mark (hereinafter referred to as "the mark") only if it meets the following requirements.

When using the mark, "audit company's logo" may be used in conjunction with the mark after obtaining approval from the audit company.

- 1) The mark following the provision for Logo Mark Design Management shall be used.
- 2) The registration number including the branch number issued by Japan Food Safety Management Association (hereinafter referred to as "JFSM") shall be indicated at the bottom of the mark.
- 3) The mark and the registration number shall be arranged to be recognized as "one mark".
- 4) The target site shall be recognizable to the mark (it can also be described in the accompanying text).
- 5) When multiple registration numbers are used in a row at the bottom of the mark, the corresponding scope of conformity certification for each registration number shall be indicated together. If the scope of the conformity assessment refers to a portion of the site rather than the entire site, the product group shall also be listed to prevent misidentification.
- 6) A conforming organization shall agree to paragraphs 2 to 6 of this provision.

* Notation example of two or more registration numbers indicated together



Registration Number 1
Registration Number 2



Registration Number 1
Registration Number 2



Registration Number 1
Registration Number 2

Provision for JFS-A/B/B Plus Standard Logo Mark Management (Requirements for Conforming Organizations and Audit Companies)	Issue date: 2023-07-11	Document number: PR_101_07_R01_en
	Revision date 2025-06-13	Revision number: R01

to be listed together with:

JFS-B00000000-00: XXX plant, JFS-B11111111-00: YYY plant JFS-B00000000-00: XXX plant
Product group: XX, JFS-B11111111-00: YYY plant Product group: YY".

2. Scope of Use of the Mark

A conforming organization may use the mark for their products, secondary packaging, instruction management regulations, buildings, vehicles, promotional materials, envelopes, business cards, printed materials, websites, and others. When using the mark, the mark user shall follow "Subject Specific Designations" below.

3. Term of Use of the Mark

The period during which a conforming organization may use the mark is from the issue date of conformity assessment to JFS-A/B/B Plus standard to the date of cancellation/withdrawal of the conformity assessment. After the date of cancellation/withdrawal, the mark should not be used in principle. (See JFS Audit and Conformity Program Document, paragraph 4.12.3(3))

In addition, when a suspension of the organization's conformity assessment occurs, it shall be ensured that the organization does not use the conformity assessment letter and mark in principle during the period of suspension, or that the use of the mark does not mislead the public into believing that the organization has received conformity assessment during the suspension.

(See JFS Audit and Conformity Assessment Program Document, paragraph 4.12.2(3))

4. Obligations of the Mark User

- (1) When using the mark, a conforming organization shall comply with the relevant laws and regulations, this provision and the provision for Logo Mark Design Management, and shall be obliged to take the utmost care to ensure that the mark is not used in a manner that is inconsistent with the purpose of the conformity assessment. The mark user shall also be obligated to refrain from any actions that may damage the credibility or image of the mark.
- (2) The mark user shall consult with JFSM to determine how to handle disputes, appeals, litigation, etc. with third parties related to the use of the mark, and the user shall bear the costs (including reasonable legal fees and litigation costs, etc.) incurred for disputes, appeals, litigation, etc.

Provision for JFS-A/B/B Plus Standard Logo Mark Management (Requirements for Conforming Organizations and Audit Companies)	Issue date: 2023-07-11	Document number: PR_101_07_R01_en
	Revision date 2025-06-13	Revision number: R01

- (3) In the case that the mark user causes damage to a third party in connection with the use of the mark, such user shall be fully liable for such damage, and JFSM and other third parties shall not be liable for any damage, loss, or liability.
- (4) Upon request from JFSM, the mark user shall report on the actual use of the mark and submit the items with the mark.

5. Prohibited Matters

The following uses are prohibited;

- (1) Use in violation of this provision and the provision for JFS Standard Logo Mark Design Management
- (2) Any use that is deemed offensive to the law or public order and morals

6. Action to be Taken in Case of Inappropriate Use of the Mark

If a conforming organization commits the misuse of the mark described in 5 above, JFSM shall take the following measures sequentially as necessary.

- (1) Request for corrective action
- (2) Warning
- (3) Cancellation of mark's license
- (4) Publication of the organization's name
- (5) Legal action

Provision for JFS-A/B/B Plus Standard Logo Mark Management (Requirements for Conforming Organizations and Audit Companies)	Issue date: 2023-07-11	Document number: PR_101_07_R01_en
	Revision date 2025-06-13	Revision number: R01

■ Requirements for Audit Companies

1. Terms and Conditions for Use of JFS-A/B/B Plus Logo Mark

After concluding "Agreement on Audit and Conformity Assessment Services" (hereinafter referred to as "the agreement") with JFSM, audit companies may use the mark of JFS-A/B/B Plus standards only if they meet the following requirements.

- (1) The mark shall be used by following the provision of Logo Mark Design Management.
- (2) When using the mark on a conformity assessment letter, the mark shall appear together with "the logo mark of each audit company".
- (3) When an audit company uses the mark as a conforming organization's mark, they shall comply with the six conditions listed above in clause 1 of "Requirements for conforming Organizations".

2. Scope of Use of the Mark

Audit companies may use the mark for a conformity assessment letter, promotional materials, envelopes, printed materials including business cards, website, and other materials in compliance with the subject-specific designations described below for each subject and method of publication.

3. Term of Use of the Mark

The period during which an audit company may use the mark shall be from the date of the agreement on audit and conformity assessment service until the date of withdraw approval by JFSM, or the date of decline of recognition from an audit company. After the date of withdrawal, an audit company shall ensure that the mark is not used in principle.

During the period of suspension, an audit company shall ensure that the use of the mark does not mislead the public into believing that its registration status is valid during the period of suspension.

4. Obligations of the Mark User

- (1) When using the mark, an audit company shall comply with the relevant laws and regulations, this provision, and the provision for JFS Standard Logo Mark Design Management. An audit company shall be obligated to take the utmost care to ensure that

Provision for JFS-A/B/B Plus Standard Logo Mark Management (Requirements for Conforming Organizations and Audit Companies)	Issue date: 2023-07-11	Document number: PR_101_07_R01_en
	Revision date 2025-06-13	Revision number: R01

the mark is not used in a manner contrary to the purpose of the conformity assessment. An audit company shall also be obligated to refrain from any actions that may damage the credibility or image of the mark.

- (2) An audit company shall consult with JFSM to determine how to handle disputes, appeals, lawsuits, etc. with third parties related to the use of the mark, and the mark user shall bear the costs (including reasonable legal fees and litigation costs, etc.) incurred for disputes, appeals, lawsuits, etc.
- (3) If an audit company causes any damage to a third party in connection with the use of the mark, the relevant user shall be fully liable for such damage, and JFSM or any other third party shall not be liable for any damage, loss, or liability.
- (4) When requested by JFSM, an audit company shall report on the actual use of the mark, submit the used items, etc.

5. Prohibited Matters

The following uses are prohibited

- (1) Use in violation of these rules and the provision for JFS Logo Mark Design Management
- (2) Any use that is deemed offensive to the law or public order and morals

6. Action to be Taken in Case of Inappropriate Use of the Mark

If an audit company commits the misuse the mark described in 5 above, JFSM shall sequentially take the following actions as necessary.

- (1) Request for corrective action
- (2) Warning
- (3) Cancellation of Mark's license
- (4) Publication of the organization's name
- (5) Legal action

7. Mark Management Policy and Management of Repro

An audit company may provide a copy of a repro of the Mark provided by JFSM to an organization that has obtained a conformity assessment letter with a legally binding arrangement, provided that the following requirements are met.

- (1) An audit company has a policy for the mark's management.

Provision for JFS-A/B/B Plus Standard Logo Mark Management (Requirements for Conforming Organizations and Audit Companies)	Issue date: 2023-07-11	Document number: PR_101_07_R01_en
	Revision date 2025-06-13	Revision number: R01

- (2) An audit company can properly manage the repro provided by JFSM.
- (3) When an audit company provides a copy of JFSM to a conforming organization, explain the control policy in (1) to the recipient and require that the copy be properly controlled.
- (4) When a conforming organization uses the mark, an audit company shall ensure that a conforming organization complies with the provision for JFS-A/B/B Plus Standard Logo Mark Management.
(Refer to JFS Audit and Conformity Assessment Program Document, 4.10(3))
- (5) In periodic or renewal audits of conforming organizations, an audit company shall include whether JFS-A/B/B Plus standard logo is used and, if so, its appropriateness in "any of the documents used for review, including audit reports, audit checklists, and corrective action requests/reports".
(Refer to JFS Audit and Conformity Assurance Program Document 4.5(4) (15))

Provision for JFS-A/B/B Plus Standard Logo Mark Management (Requirements for Conforming Organizations and Audit Companies)	Issue date: 2023-07-11	Document number: PR_101_07_R01_en
	Revision date 2025-06-13	Revision number: R01

■ Subject Specific Designations

1. Prohibition of Misidentification When Using the mark

When using the JFS—A/B/B Plus standards logo mark (hereinafter referred to as “the mark”), the following three matters shall be addressed so that there are no effects related to the mark;

- (1) There shall be no misidentification that the conformity assessment corresponds to "product certification" (i.e., the product itself is certified as conforming).
- (2) There shall be no misconception that something outside the original conformity assessment's scope falls within the original conformity assessment's scope.
- (3) No other disadvantages are caused to JFSM's activities or the integrity of the conformity assessment.


When written explanations are also included in response to the above, please confirm the specifications in clause 2 of the subject specific designations and respond to them. When writing additional information on the mark, it shall be placed on the same side where the mark used so that it shall be properly understood that the information is an explanation of the mark.

2. Designations for Use of the Mark

The following are the specifications for the use of the mark on each subject, including whether or not the mark is used, the content of the mark, and the placement of the mark. The end of a sentence may be changed or a new line may be added, as long as the meaning of the parallel text remains the same.

Provision for JFS-A/B/B Plus Standard Logo Mark Management (Requirements for Conforming Organizations and Audit Companies)	Issue date: 2023-07-11	Document number: PR_101_07_R01_en
	Revision date 2025-06-13	Revision number: R01

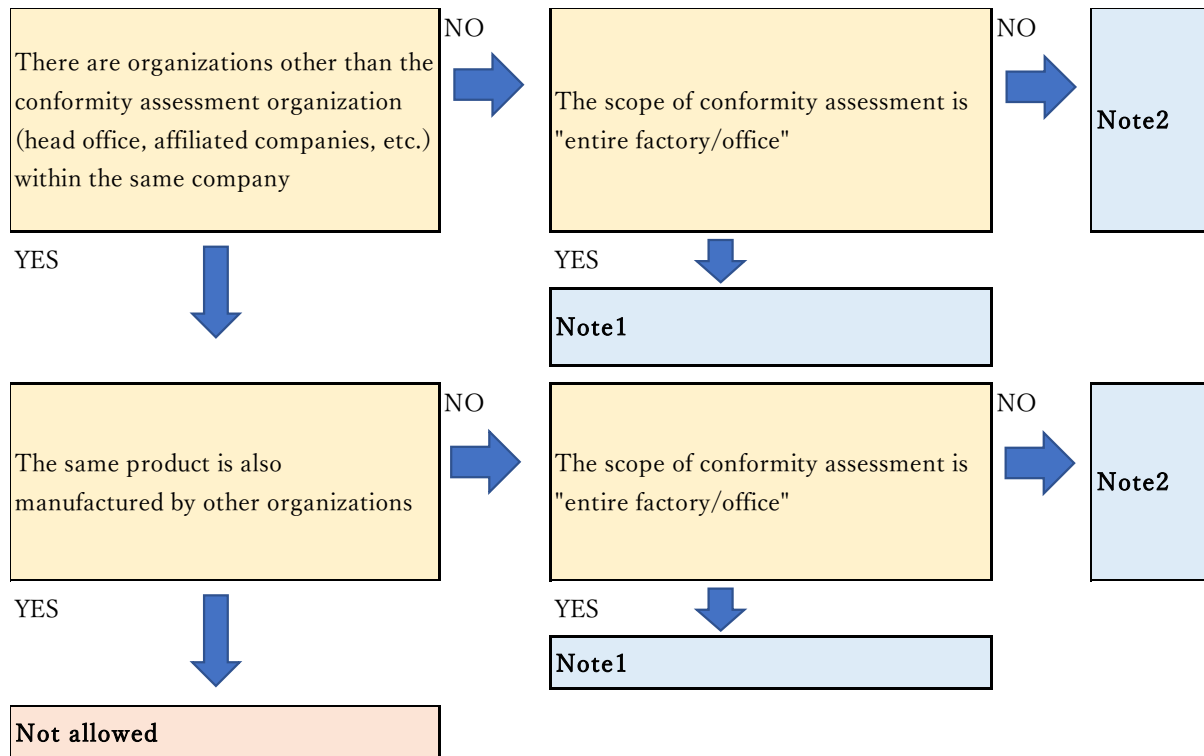
■ **When the mark is used on the product itself, on the product's wrapping paper, or on cardboard for packaging or transportation**

Notes to be mentioned together	<p>Mandatory</p> <ul style="list-style-type: none"> - A sentence stating that "JFS standards are not product certification" shall be added. - The scope of conformity assessment shall be described in a manner that there is no misunderstanding. - The manufacturing site's address and organization name shall match the conformity assessment scope.
Publication Example	<p>Any position on the front, back, etc., is acceptable, as long as the mark or additional information is appropriate and does not affect the recognition of the text.</p> <div style="text-align: center;">  </div>

■ **Text to be included when the mark is used on the product itself, on the product's wrapping paper, or on cardboard for packaging or transportation.**

- Check the status of the organization, starting with the items in the upper left of the flow below, and include the necessary details in the combined description.

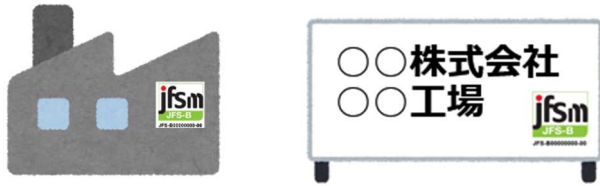
Provision for JFS-A/B/B Plus Standard Logo Mark Management (Requirements for Conforming Organizations and Audit Companies)	Issue date: 2023-07-11	Document number: PR_101_07_R01_en
	Revision date 2025-06-13	Revision number: R01



Note 1	JFS standard is not a product certification. This product is manufactured at XX plant that has obtained the conformity assessment to (input the name of acquired standard), which is a food safety management system
Note 2	The JFS standard is not a product certification. This product is manufactured at XX plant, which has obtained the conformity assessment of (input the name of acquired standard), which is a food safety management system. Scope of conformity assessment: XX, XX

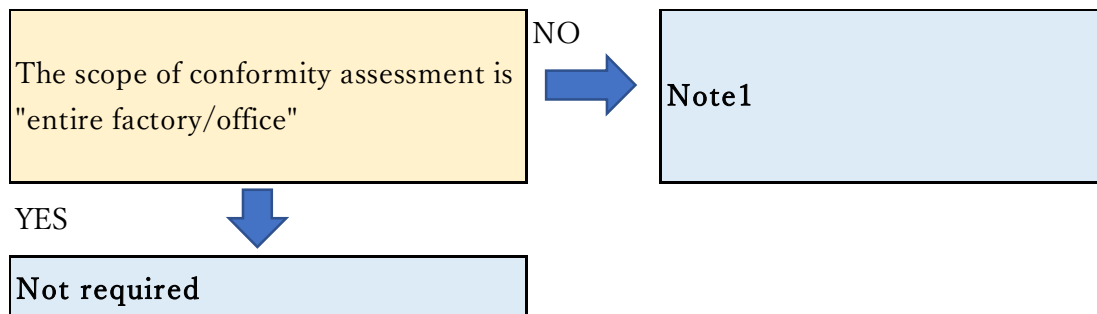
Provision for JFS-A/B/B Plus Standard Logo Mark Management (Requirements for Conforming Organizations and Audit Companies)	Issue date: 2023-07-11	Document number: PR_101_07_R01_en
	Revision date 2025-06-13	Revision number: R01

■ When the mark is used on the exterior wall of a conforming organization, signage for a conforming organization

Notes to be mentioned together	Mandatory depending on the scope of conformity assessment If the scope of the conformity assessment does not cover “the entire factory/office”, a conforming organization shall describe it so that there is no misunderstanding of the scope.
Example	Can be posted on the organization's exterior walls, signage on the premises, etc. 

■ Text to be included when the mark is used on the exterior walls or signage of a conforming organization.


- Check the status of the organization, starting with the items in the upper left of the flow below, and include the necessary details in the combined description.



Notes	Product group: XX, XX, etc.
-------	-----------------------------

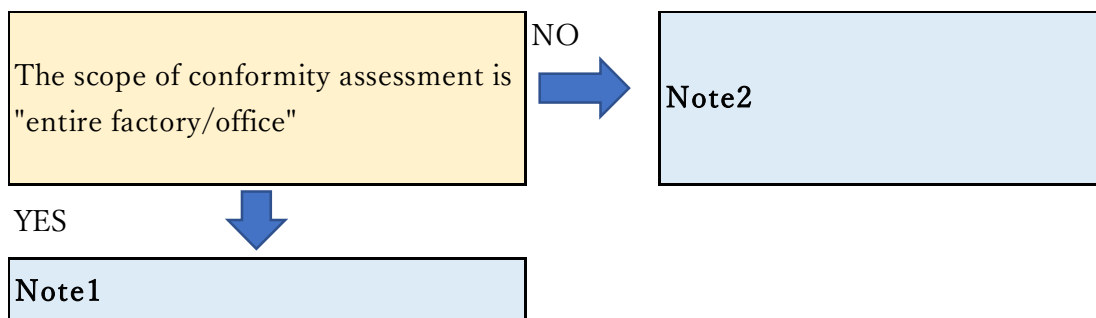
Provision for JFS-A/B/B Plus Standard Logo Mark Management (Requirements for Conforming Organizations and Audit Companies)	Issue date: 2023-07-11	Document number: PR_101_07_R01_en
	Revision date 2025-06-13	Revision number: R01

- When the mark is used on a building exterior other than a conforming organization or a sign other than on the premises of the organization

Notes to be mentioned together	<p>Mandatory</p> <p>There shall be no misconception that something outside the original conformity assessment's scope falls within the original conformity assessment's scope.</p> <p>If the scope of conformity assessment does not cover "the entire factory/office," the scope shall be stated so that there is no misidentification of the scope.</p>
Example	<p>Can be posted on the organization's exterior walls, signage on the premises, etc.</p> 

- Text to be included when the mark is used on the exterior of a building of a non-conformity assessment organization or a signboard outside the premises of such an organization


- Check the status of the organization, starting with the items in the upper left of the flow below, and include the necessary details in the combined description.



Note 1	Scope of conformity assessment: XX Plant of XX Co.
Note 2	Scope of conformity assessment: XX Corporation, XX Plant Product group: XX

Provision for JFS-A/B/B Plus Standard Logo Mark Management (Requirements for Conforming Organizations and Audit Companies)	Issue date: 2023-07-11	Document number: PR_101_07_R01_en
	Revision date 2025-06-13	Revision number: R01

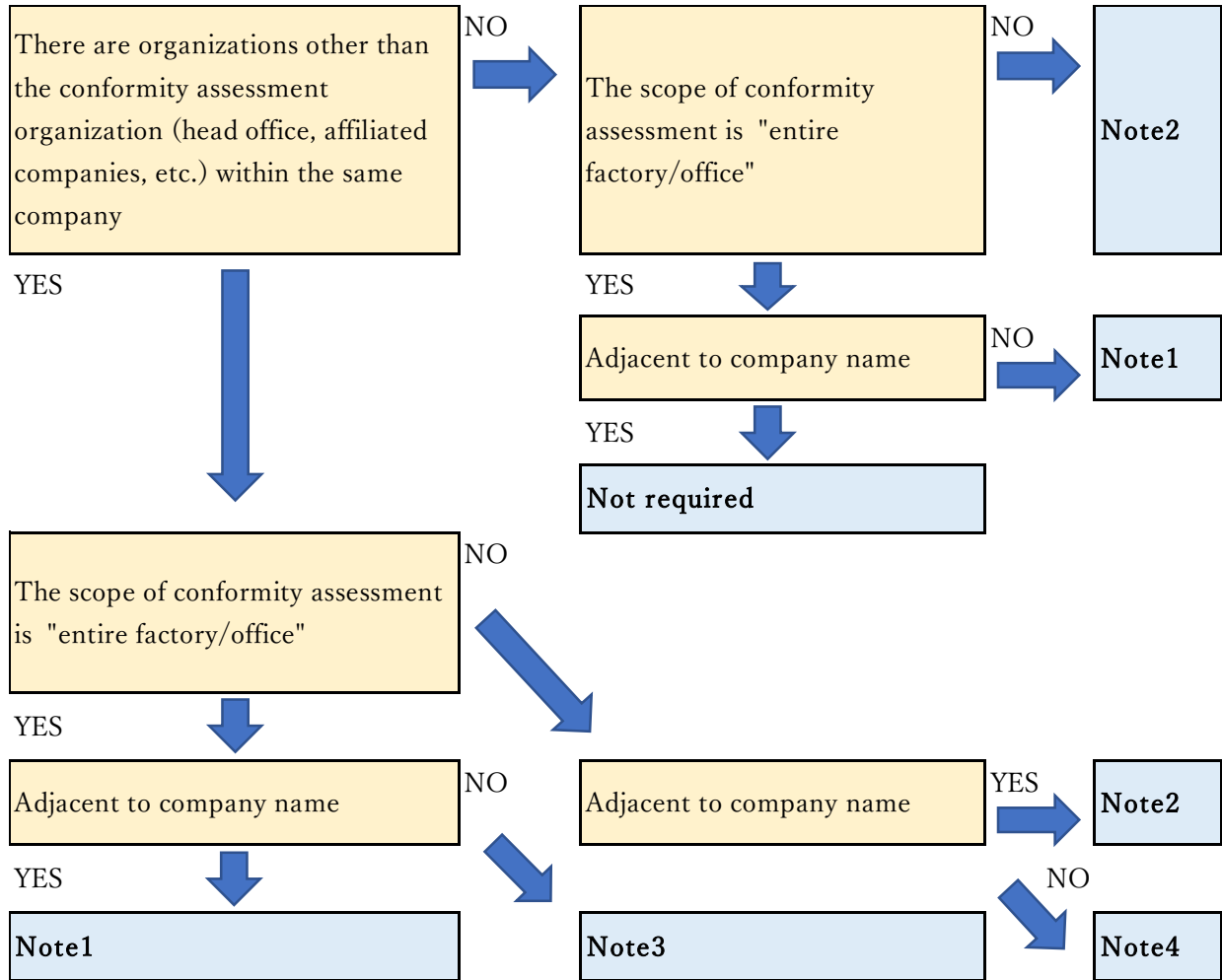
■ Text to be included when the mark is used on in-house delivery trucks and company cars

Notes to be mentioned together	<p>Mandatory depending on the scope of conformity assessment</p> <p>If the scope of conformity assessment is not the "entire plant/office," please be sure that the scope is not misinterpreted.</p> <p>If there are an alternative organization other than a conforming organization (head office, affiliated company, etc.) in the same company, the scope shall be stated so that there is no misidentification of the scope.</p>
Example	<p>Can be featured on the exterior of the vehicle.</p> 

■ Text to be displayed with the mark on in-house delivery trucks and company cars.

- Check the status of the organization, starting with the items in the upper left of the flow below, and include the necessary details in the combined description.

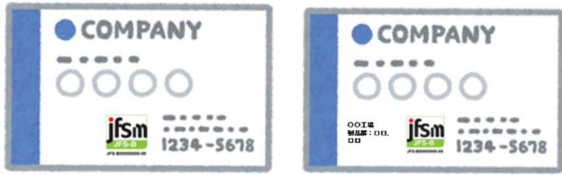
Provision for JFS-A/B/B Plus Standard Logo Mark Management (Requirements for Conforming Organizations and Audit Companies)	Issue date: 2023-07-11	Document number: PR_101_07_R01_en
	Revision date 2025-06-13	Revision number: R01



Note 1	Scope of conformity assessment: XX plant
Note 2	Scope of conformity assessment: XX plant Product group: □□□, □□□
Note 3	Scope of conformity assessment: XX plant of XX Corporation
Note 4	Scope of conformity assessment: XX plant of XX Corporation Product group: □□□, □□□

Provision for JFS-A/B/B Plus Standard Logo Mark Management (Requirements for Conforming Organizations and Audit Companies)	Issue date: 2023-07-11	Document number: PR_101_07_R01_en
	Revision date 2025-06-13	Revision number: R01

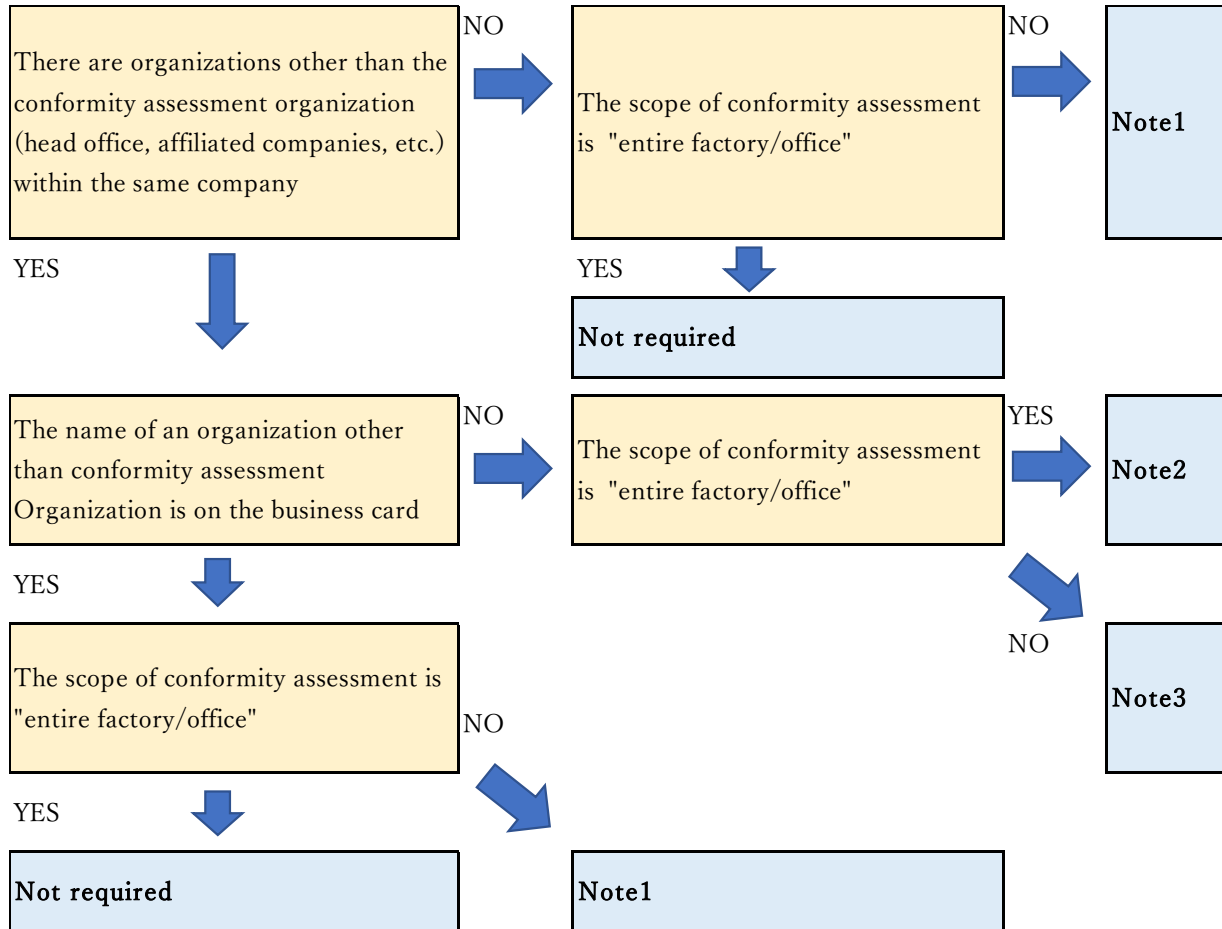
■ **When the mark is used on the business card of a person who belongs to a business or factory (organization) that has obtained a conformity assessment**

Notes to be mentioned together	<p>Mandatory depending on the scope of conformity assessment</p> <ul style="list-style-type: none"> • If the scope of conformity assessment is not "entire factory/office," describe the scope. • If there are organizations other than the conformity assessment organization (e.g., headquarters, affiliated companies, etc.) within the same company, the scope shall be described so that there is no misinterpretation of the scope. • If the entire scope of conformity assessment cannot be described, "Please refer to the website for details" can be used. <p>However, the QR code or URL of the relevant page of the website should be placed on the same side of the document so that it can be referred to.</p>
Example	

■ **Text to be included when using the mark on a business card of a person who belongs to a business or factory (organization) that has obtained a conformity assessment**

Check the status of the organization, starting with the items on the upper left of the flow chart below, and include the necessary information in the annexed text.


Provision for JFS-A/B/B Plus Standard Logo Mark Management (Requirements for Conforming Organizations and Audit Companies)	Issue date: 2023-07-11	Document number: PR_101_07_R01_en
	Revision date 2025-06-13	Revision number: R01



Note 1	Product Group XX, XXX Product group: Please refer to the Website for details. [http://~]" (description of HP address, QR code, etc. that leads to the relevant page of HP)
Note 2	Scope of conformity assessment: XX plant
Note 3	Scope of conformity assessment: XX plant Product group: XX, XX Scope of conformity assessment: XX plant Product group: Please refer to our website for details. http://~" (HP address, QR code, etc.) (Description that leads to the relevant page of the HP)

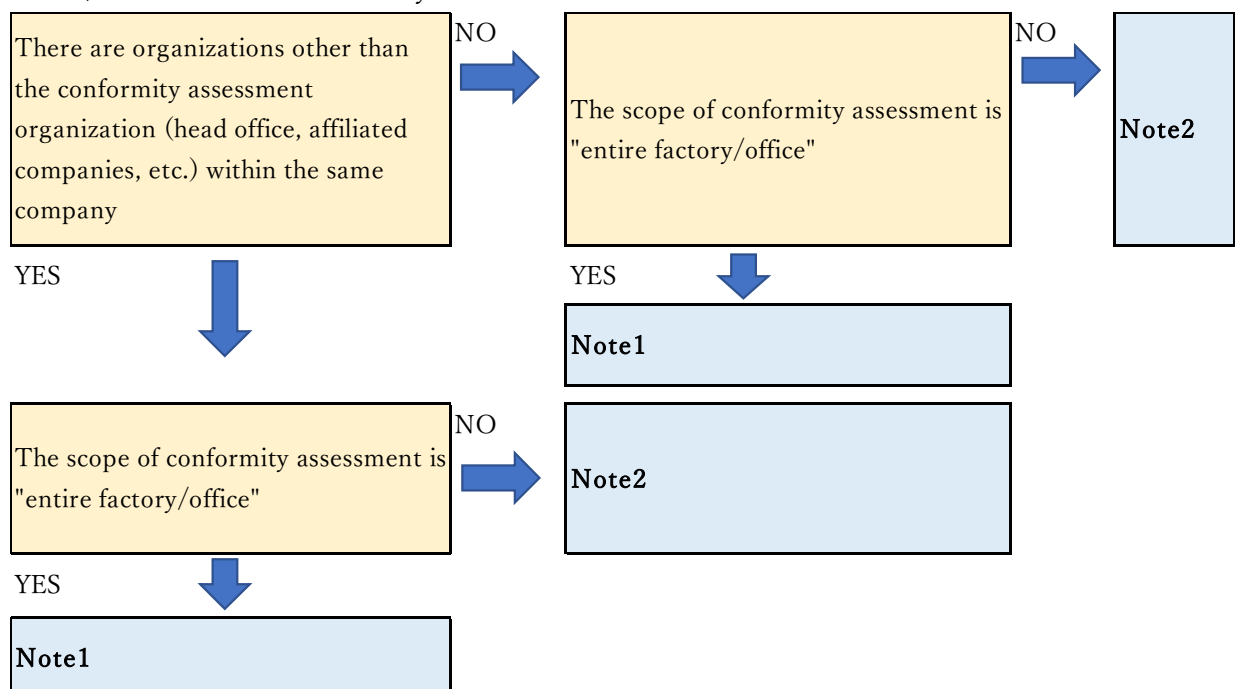
Provision for JFS-A/B/B Plus Standard Logo Mark Management (Requirements for Conforming Organizations and Audit Companies)	Issue date: 2023-07-11	Document number: PR_101_07_R01_en
	Revision date 2025-06-13	Revision number: R01

■ **When the mark is used on the business cards of employees of the same company or group of the conforming organization**

Notes to be mentioned together	<p>Mandatory</p> <ul style="list-style-type: none"> • The scope shall be described so that there is no misunderstanding of the scope for each organization other than the "Conformity assessment Organization". • If the scope of conformity assessment does not cover the entire factory/office, the scope shall be stated. • If the scope of conformity assessment does not cover the entire factory/office, it is acceptable to state "Please refer to our website for details. However, the QR code or URL of the relevant page of the website should be placed adjacent to the website on the same side so that it can be referred to.
Example	

■ **Text that shall be included when the mark is displayed on the business cards of employees of the same company or group company as the conforming organization**

- Check the status of the organization, starting with the items on the upper left of the flow chart below, and include the necessary information in the annexed text.




Provision for JFS-A/B/B Plus Standard Logo Mark Management (Requirements for Conforming Organizations and Audit Companies)	Issue date: 2023-07-11	Document number: PR_101_07_R01_en
	Revision date 2025-06-13	Revision number: R01

Provision for JFS-A/B/B Plus Standard Logo Mark Management (Requirements for Conforming Organizations and Audit Companies)	Issue date: 2023-07-11	Document number: PR_101_07_R01_en
	Revision date 2025-06-13	Revision number: R01

Note 1	Scope of conformity assessment: XX plant
Note 2	<p>Scope of conformity assessment: XX plant Product group: XX, XX</p> <p>Scope of conformity assessment: XX plant Product group: Please refer to the HP for details.</p> <p>http://~" (HP address, QR code, etc.) (Description that leads to the relevant page of the HP)</p>

Provision for JFS-A/B/B Plus Standard Logo Mark Management (Requirements for Conforming Organizations and Audit Companies)	Issue date: 2023-07-11	Document number: PR_101_07_R01_en
	Revision date 2025-06-13	Revision number: R01

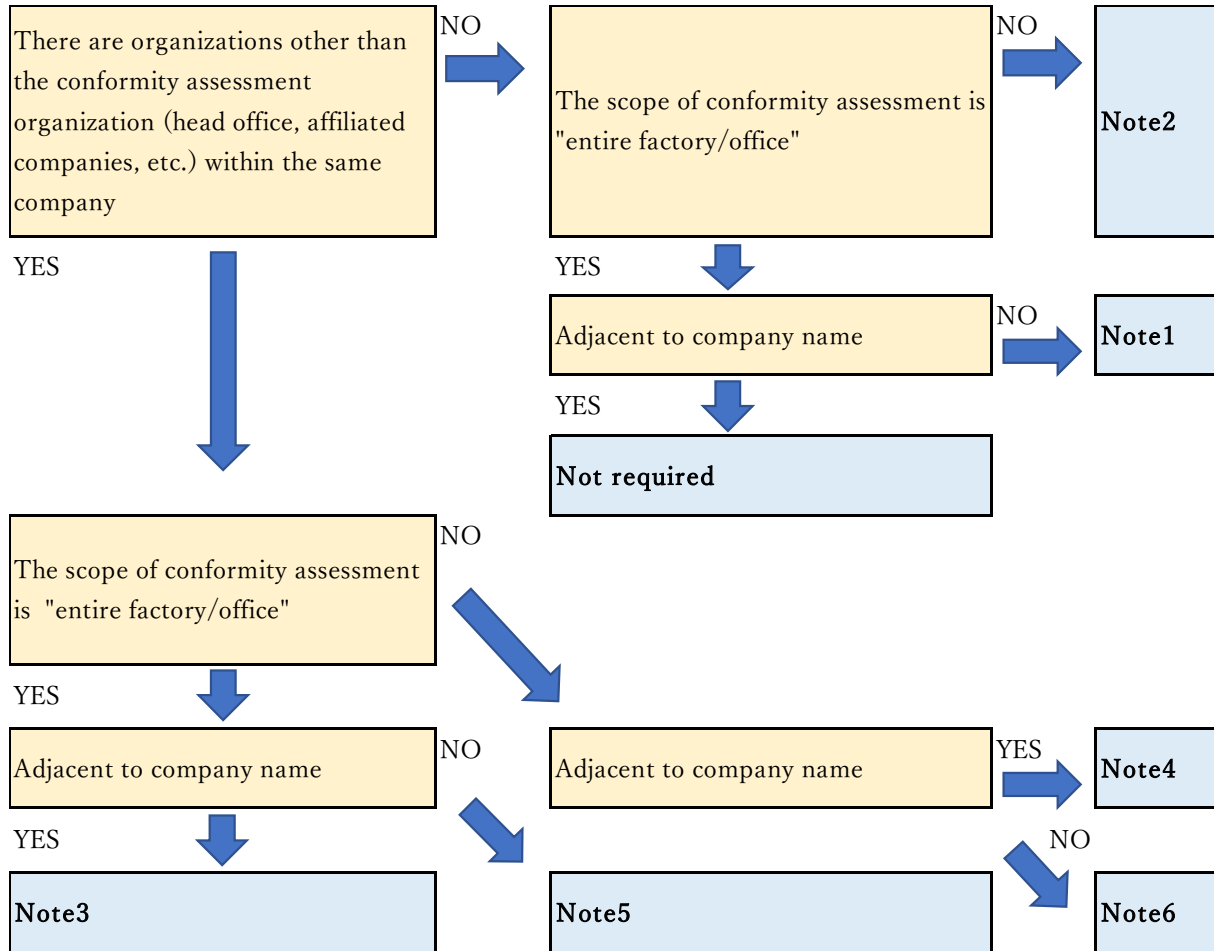
■ When using the mark on flyers, pamphlets, websites, product specification sheet, POPs, etc.

Notes to be mentioned together	<p>Mandatory depending on the scope of conformity assessment</p> <ul style="list-style-type: none"> • If the scope of conformity assessment does not cover "entire factory/office", the scope shall be stated. • If there are organizations other than the conformity assessment organization (head office, affiliated companies, etc.) within the same company, describe them so that there is no misunderstanding of the scope. • A conforming organization shall pay attention to its placement and annexation to avoid misidentification as product certification.
Example	

■ Text that shall be included in flyers, pamphlets, websites, product specification sheets, POPs, and other advertising materials when the mark is displayed

- Check the status of the organization, starting with the items on the upper left of the flow chart below, and include the necessary information in the annexed text.

Provision for JFS-A/B/B Plus Standard Logo Mark Management (Requirements for Conforming Organizations and Audit Companies)	Issue date: 2023-07-11	Document number: PR_101_07_R01_en
	Revision date 2025-06-13	Revision number: R01



Note 1	Scope of conformity assessment: XX Corporation
Note 2	Scope of conformity assessment: XX Corporation Product group: XX, XX
Note 3	Scope of conformity assessment: XX plant
Note 4	Scope of conformity assessment: XX plant Product group: XX, XX
Note 5	Scope of conformity assessment: XX Corporation XX Plant
Note 6	Scope of conformity assessment: XX Corporation, XX Plant Product group: XX, XX

Provision for JFS-A/B/B Plus Standard Logo Mark Management (Requirements for Conforming Organizations and Audit Companies)	Issue date: 2023-07-11	Document number: PR_101_07_R01_en
	Revision date 2025-06-13	Revision number: R01

3. Other Precautions

When taking actions other than those listed above, conforming organizations and audit companies must consult with JFSM and take action to ensure that there is no misuse.

Disclaimer: The translation process used on this English website is partially offered by a "machine translation" for your convenience. This translated document is provided for information purposes only. In the event of a difference of interpretation or a dispute, the original Japanese version of this document is binding.

(End of the document)